



September 2015

Welcome to *Inside FasTracks* – your monthly update about FasTracks news, progress and people

FasTracks News

University of Colorado System sponsors the A Line and Flatiron Flyer



The Regional Transportation District (RTD) Board of Directors recently approved a five-year, \$5 million naming rights agreement allowing the University of Colorado System (CU) to promote its name and logo on the A Line – the commuter rail line under construction from Denver Union Station to Denver International Airport – and on Flatiron Flyer buses, which begin service in January along U.S. 36 between Boulder and Denver.

CU will place ads on the exterior of airport trains, along with its name and logo, and on other promotional and informational materials associated with the A Line and Flatiron Flyer.

See the full [story](#).

In related news...

Hop on the bus, Gus.

Release of new video shows how bus rapid transit service will work on U.S. 36

Check out this new [video](#) explaining how the Flatiron Flyer service will work on U.S. 36 and the many benefits it will offer to riders. The video was jointly produced by RTD and 36 Commuting Solutions — popcorn not included.

'Rising Sun' arch at Colfax Station to span I-225 in Aurora

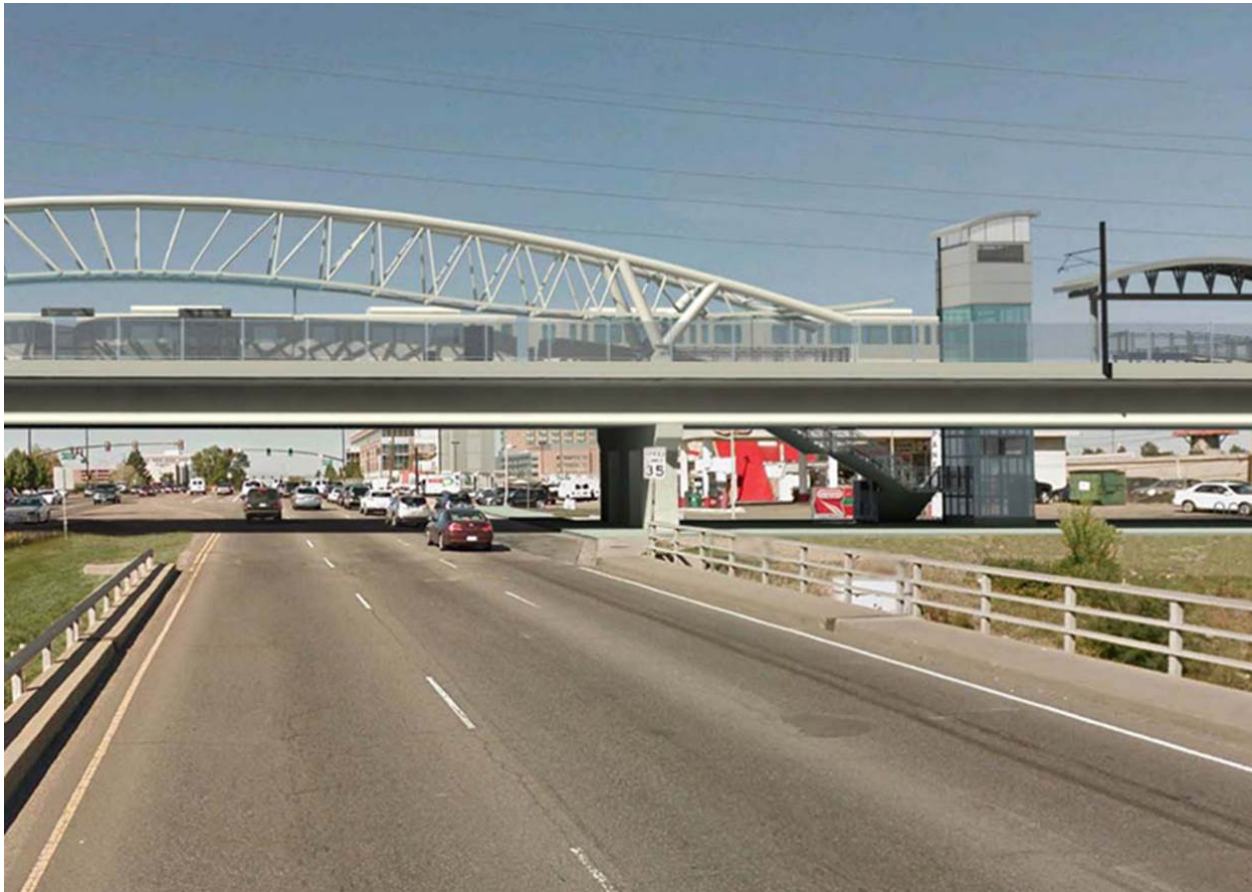


Illustration of what the decorative arch and Colfax Station spanning I-225 will look like when finished

Construction crews working on the 10.5-mile R Line through Aurora will install a decorative arch at the Colfax Station over I-225 later this month. The elevated station will span Colfax Avenue east of Fitzsimons Parkway.

The iconic arch was designed to resemble the “Rising Sun,” a feature of the city of Aurora’s logo. This will become the city’s signature station and stands near to where the city’s original “Gateway to the West” sign once stood. The station will serve Aurora, the University of Colorado Anschutz Medical Campus, the Veterans Administration Hospital and Children’s Hospital Colorado.

In addition to being one of eight stations along the line, the Colfax Station will also double as a pedestrian bridge and will include street-level public art.

The 252-foot-long arch was fabricated by Schuff Steel Company, Midwest Division – the same company that fabricated steel for the white canopies at Union Station. The arch comprises seven pieces that will be assembled and installed over two to three nights and will require full overnight closures of Colfax Avenue.

Your RTD Board Director is calling... RTD Board of Directors to host telephone town hall meetings

The RTD Board of Directors will host a series of live telephone town hall meetings and they want to speak with you.

Fifteen sessions will be conducted from Sept.28 through Oct. 22, each hosted by the director of his or her RTD district. The agency employs this innovative technology to reach 450,000 residents throughout the metro region. Residents will be called and invited to remain on the line to be included in the live telephone town hall event. You'll learn the latest about bus and light rail service, the FasTracks transit expansion program and other RTD projects.



For more information and to find out how you can participate in the meeting, please visit www.rtd-denver.com.

Citizens Advisory Committee holds quarterly meeting in Westminster

The public is invited to the RTD FasTracks Citizens Advisory Committee's quarterly meeting, which will take place **6-8 p.m., Sept. 16, in the council chambers at Westminster City Hall**. Updates will be presented on the new Flatiron Flyer bus rapid transit service opening in January and on other FasTracks projects. CAC members also want to hear comments and input from the public.

Westminster City Hall is located at 4800 W. 92nd Ave..

Learn more about the [CAC](#).

You're Invited...

New Central Park Park-n-Ride hosts open house

Come for the fun, food – or information, but please do join RTD and its contractor, Denver Transit Partners (DTP), for a community open house, **11 a.m. to 1 p.m., Sept. 26**, and see the new Central Park Park-n-Ride Station in Stapleton.

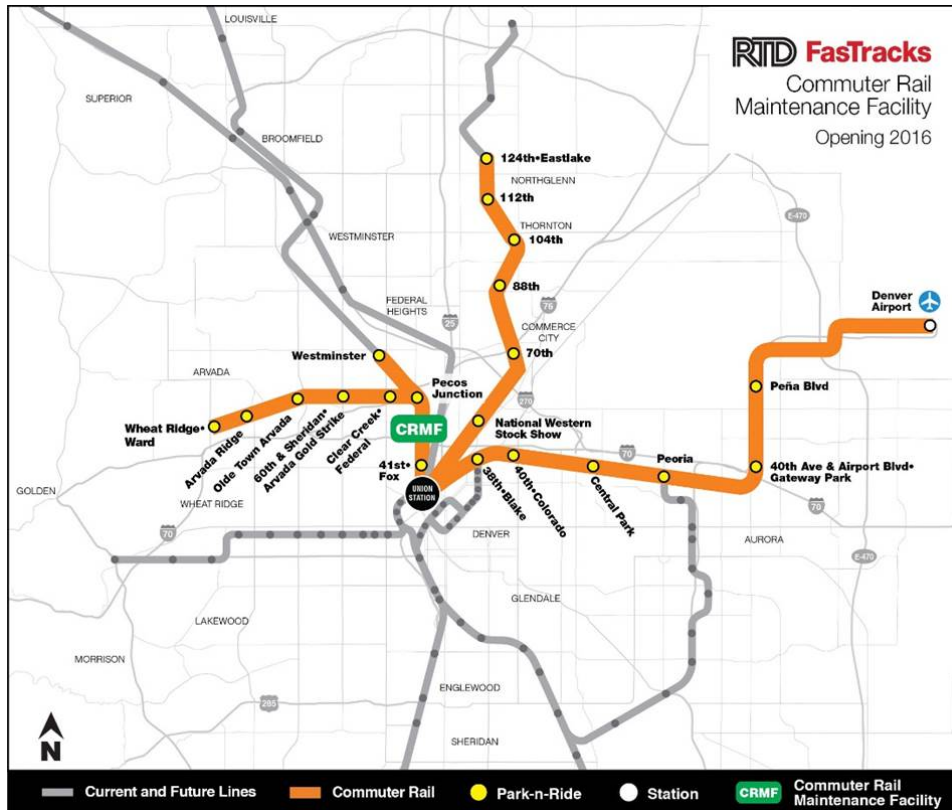
See final station designs, learn about new commuter rail cars and how to ride, how to be safe around trains, and understand the testing process as RTD and DTP finish building the A Line between Union Station and Denver International Airport.

The new station is located north of the current Stapleton Park-n-Ride at Smith Road and Uinta Street. This will be the last public open house prior to the opening of the A Line, which is scheduled for spring 2016.

For more information, a special needs request or to request Spanish translation, please contact Joshua Solis at 303-297-5284, or email Joshua.solis@dtjv.com.

Four Commuter Rail Lines under construction

RTD's FasTracks program is building four new commuter rail lines offering more transit options to metro region's residents



- The **A Line**, opening in 2016, will run from Union Station to Denver International Airport.
- The **B Line**, opening 2016, will run from Union Station to Westminister.
- The **G Line**, opening in 2016, will run from Union Station to Arvada and Wheat Ridge.
- The **N Line**, opening in 2018, will run from Union Station through Commerce City, Thornton and Northglenn.

Check out information on all of the new RTD [commuter rail lines](#) coming to Denver.

Progress Updates

[Central Rail Extension](#)

[Denver Union Station](#)

[Eagle P3 Project](#)

[East Rail Line](#)

[Free MetroRide](#)

[Gold Line](#)

[I-225 Rail Line](#)

[Maintenance Facilities](#)

[North Metro Rail Line](#)

[Northwest Rail Line](#)

[Southeast Rail Extension](#)

[Southwest Rail Extension](#)

[U.S. 36 Bus Rapid Transit](#)

[West Rail Line](#)

RTD Board Meetings

The RTD Board holds regular meetings most Tuesdays. [Learn more...](#)

Calendar of Events

For a complete listing of upcoming events and activities, click [here](#).

Now Presenting

To schedule a FasTracks presentation for your group or organization, contact the FasTracks Public Information Team today at 303-299-6990.

FasTracks is RTD's voter-approved transit expansion program to build 122 miles of commuter rail and light rail, 18 miles of bus rapid transit service, add 21,000 new parking spaces, redevelop Denver's historic Union Station and redirect bus service to better connect the eight-county district. For more information about FasTracks, visit www.rtd-fastracks.com.

[Unsubscribe](#)